

KLIMA-FLEX 1 INSIDE HANDLE



Inside handle for Klima-flex 1. When the handle is used as an emergency handle it should only be combined with non-lockable latching units.

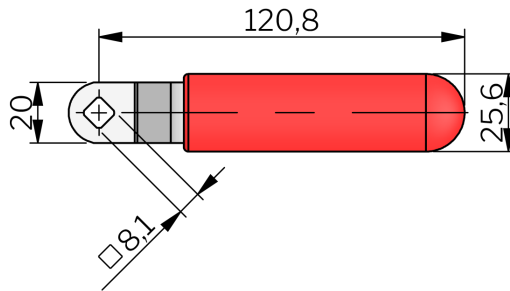
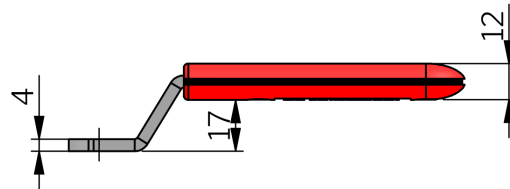


MATERIAL

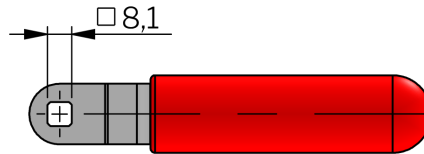
Handle: Steel, zinc plated and glass fibre reinforced Polyamide (PA6GF30), black or red

TECHNICAL INFORMATION

Standards: VDI 6022



265076-50



265076-52

P/N	Description	For locking unit
265076-50	Inside red handle, diagonal mounting	All
265076-51	Inside black handle, diagonal mounting	All
265076-52	Inside red handle, vertical/horizontal mounting	All
265076-53	Inside black handle, vertical/horizontal mounting	All